

# WHO IS A CLOSE CONTACT?

## CLOSE CONTACT

You were within 2 metres distance.



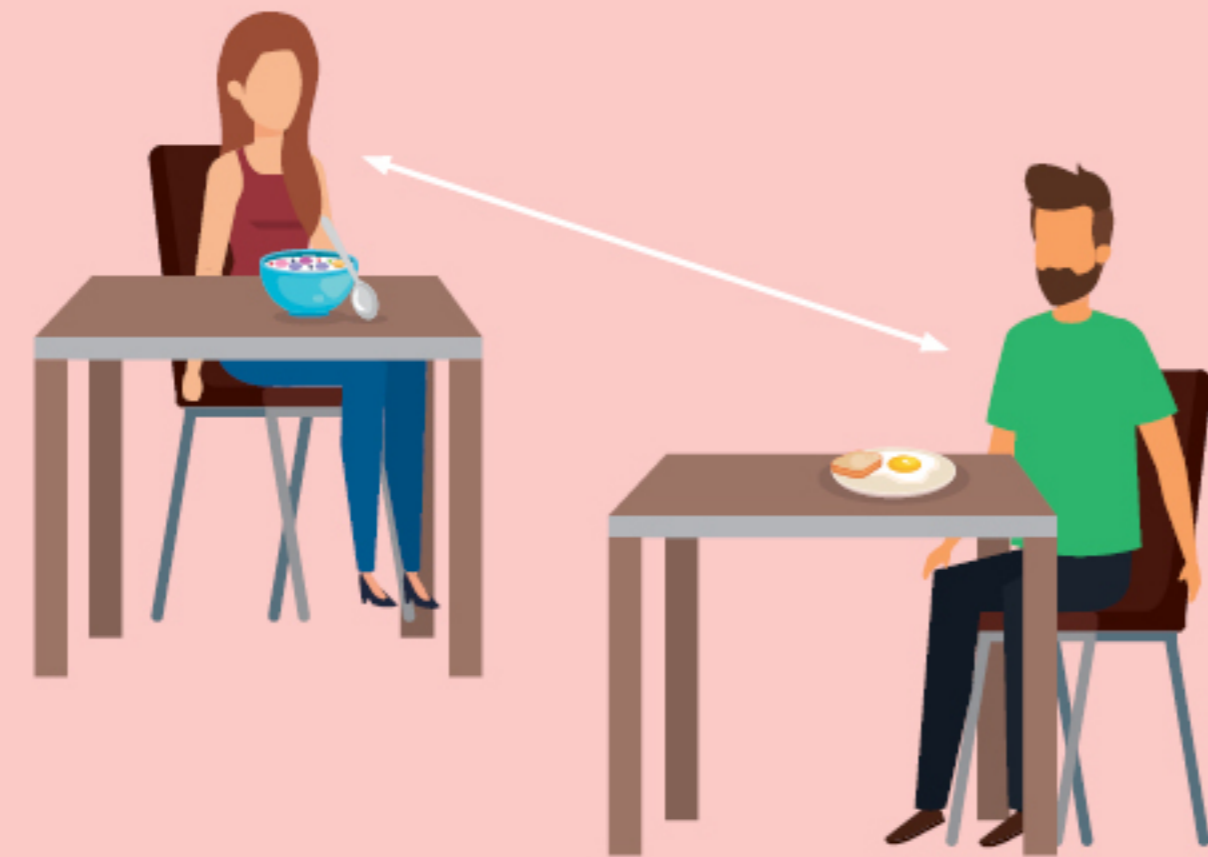
Someone beside you at your workplace.



A person who accidentally sneezed, or coughed on you while talking in close proximity.



## NOT CLOSE CONTACT



You maintained 2 metres distance.

Someone at your workplace that you do not work with.



Briefly had a chat in the hallway, but kept your distance.

You passed a person quickly in the hallway.

