

LOCATION PLAN

PROPOSED CLOSURE OF
UNOPENED ROAD ALLOWANCE AT

1181 GOVERNOR'S ROAD

CITY OF HAMILTON
PUBLIC WORKS DEPARTMENT

LEGEND

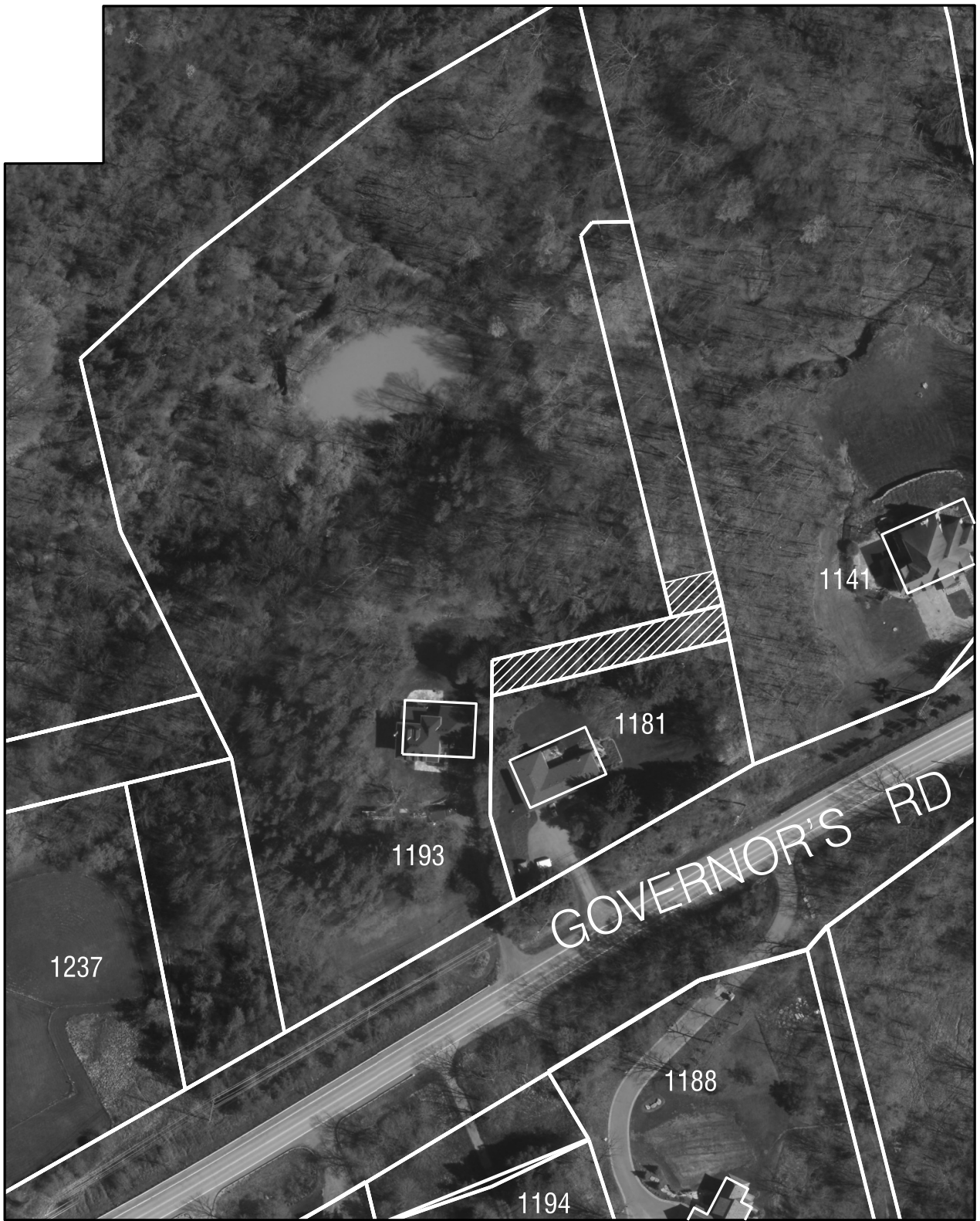


SUBJECT LANDS

DATE: AUGUST 26, 2019

Not to Scale | Sketch By: CF

REFERENCE FILE NO : PW19_



Hamilton

PROPOSED CLOSURE OF PORTION OF UNOPENED ROAD
ALLOWANCE AT 1181 GOVERNOR'S ROAD

Geomatics & Corridor Management Section
Public Works Department

LEGEND

 **Lands to be Closed**