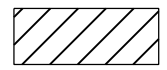


LOCATION PLAN

PROPOSED CLOSURE OF
PORTION OF
LANG STREET

CITY OF HAMILTON
PUBLIC WORKS DEPARTMENT

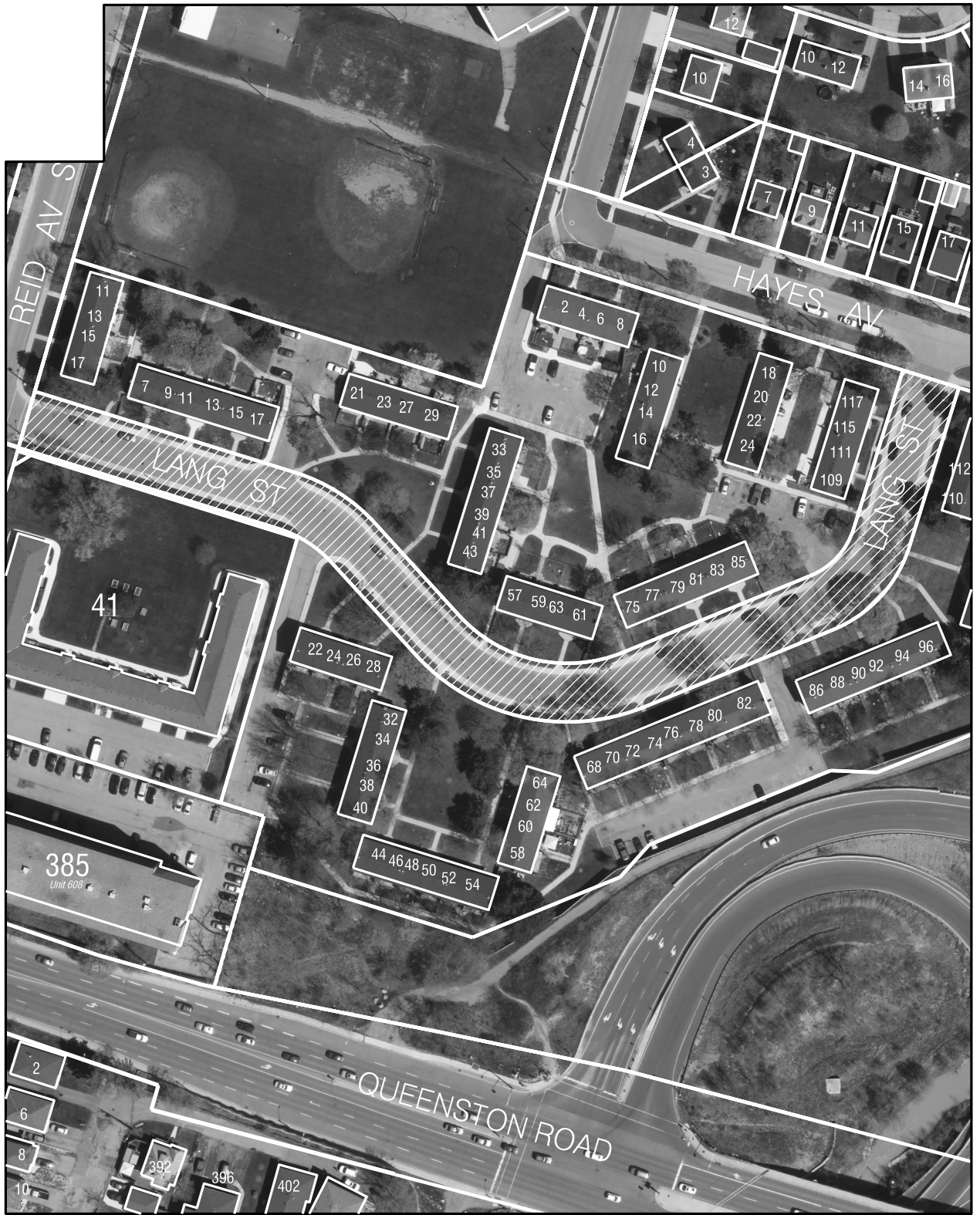
LEGEND



SUBJECT LANDS

DATE: September 24, 2019 | Not to Scale | Sketch By: CF

REFERENCE FILE NO : PW19_



Hamilton

PROPOSED CLOSURE OF PORTION OF LANG STREET

Geomatics & Corridor Management Section
Public Works Department

LEGEND



Lands to be Closed