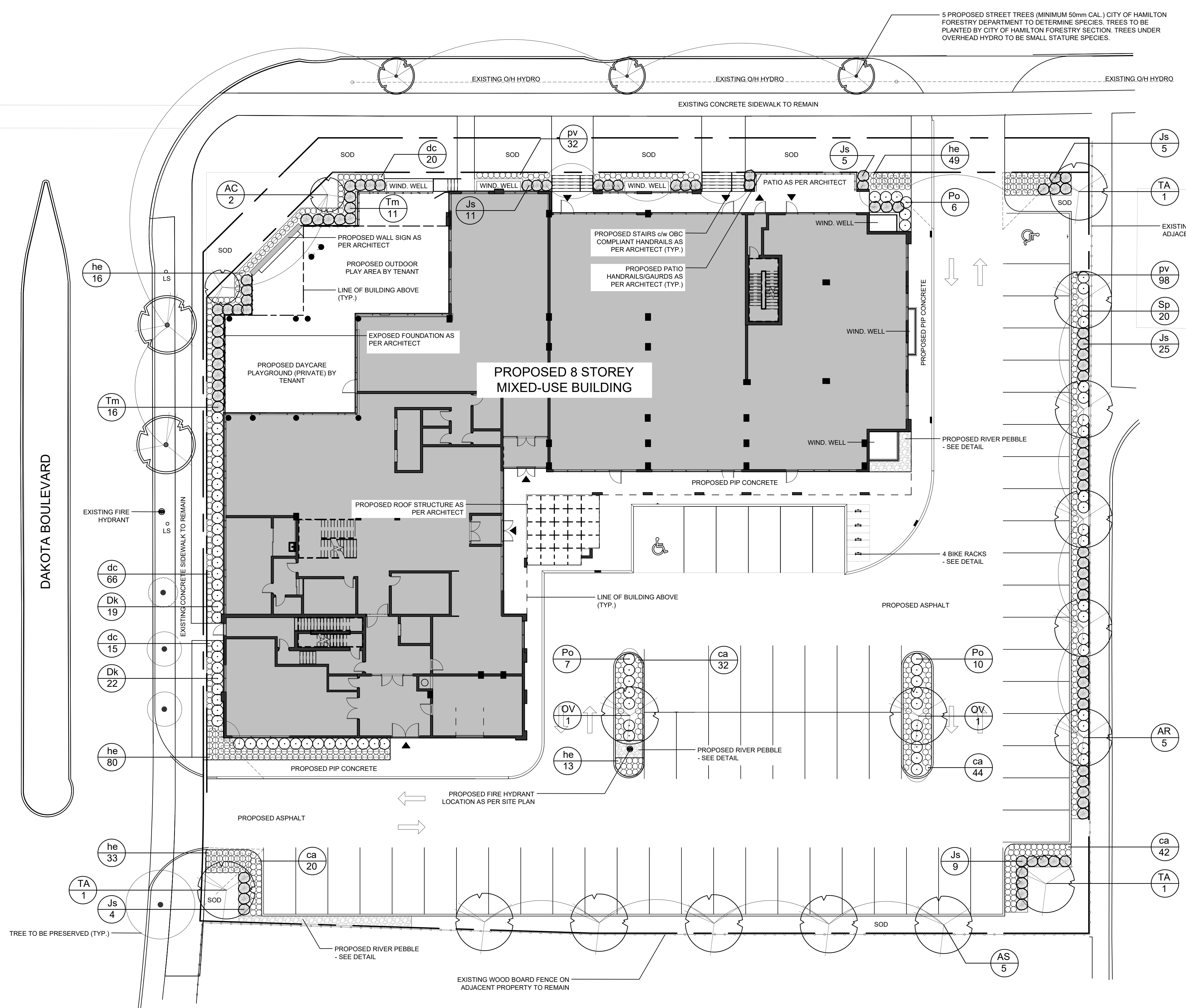
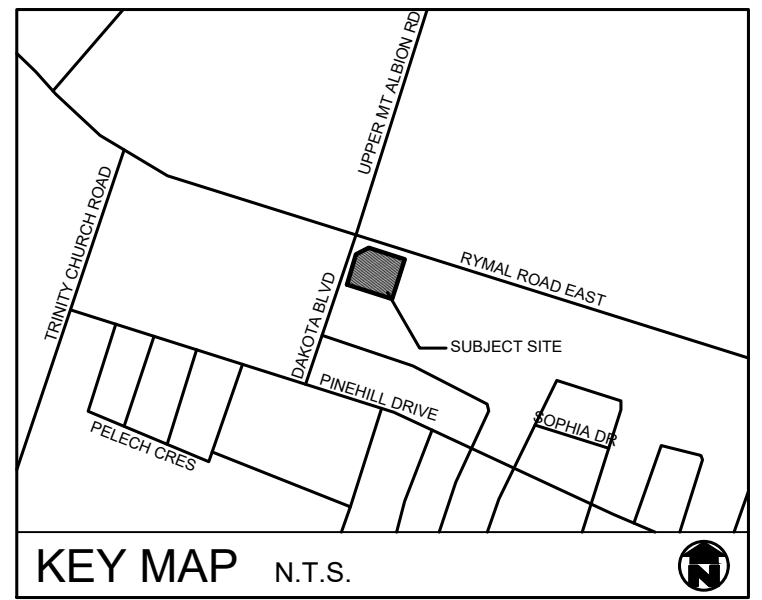


RYMAL ROAD EAST



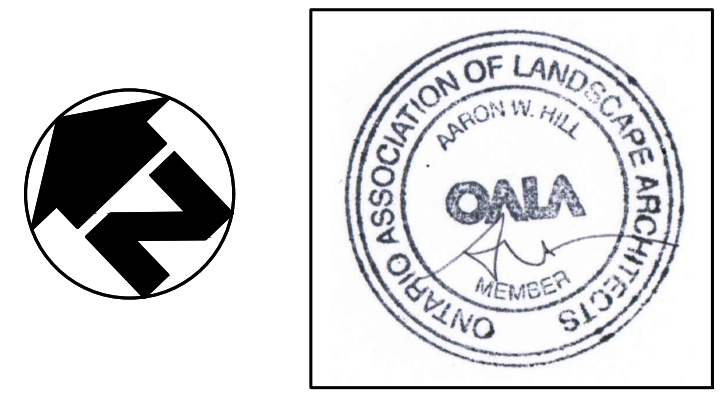
PLANT MATERIAL LIST

KEY	QUANT.	BOTANICAL NAME	COMMON NAME	SIZE	COND.
AC	2	Amelanchier canadensis	Serviceberry (treeform)	70mm cal.	W.B.
AR	5	Acer rubrum 'Red Rocket'	Red Rocket Maple	70mm cal.	W.B.
AS	5	Acer saccharum Autumn Fest	Autumn Fest Sugar Maple	70mm cal.	W.B.
OV	2	Ostrya virginiana	Ironwood	70mm cal.	W.B.
TA	3	Tilia americana 'Redmond'	Redmond Basswood	70mm cal.	W.B.
Dk	41	Diervilla lonicera 'Kodiak Orange'	Kodiak Orange Bush Honeysuckle	60cm, 3 gal.	Pot
Js	59	Juniperus sabina	Savin Juniper	60cm, 3 gal.	Pot
Po	23	Physocarpus opulifolius 'Dart's Gold'	Dart's Gold Ninebark	60cm, 3 gal.	Pot
Sp	20	Salix purpurea 'Nana'	Blue Arctic Willow	60cm, 3 gal.	Pot
Tm	27	Taxus x media 'Hicksii'	Hicks Yew	60cm, 7 gal.	Pot
ca	138	Calamagrostis acutiflora 'Lightning Strike'	Lightning Strike Feather Reed Grass	1 gal.	Pot
dc	101	Deschampsia cespitosa Gold Veil	Gold Veil Tufted Hair Grass	1 gal.	Pot
he	174	Hemerocallis 'Stella d'Oro'	Stella d'Oro Daylily	1 gal.	Pot
pv	130	Panicum virgatum 'Prairie Winds' Cheyenne Sky	Cheyenne Sky Switch Grass	1 gal.	Pot



GENERAL NOTES

- ALL WORKMANSHIP WILL BE TO THE STANDARDS OF LANDSCAPE ONTARIO.
- ALL PLANT MATERIAL TO BE NO.1 GRADE NURSERY GROWN IN ACCORDANCE WITH THE CANADIAN STANDARDS FOR NURSERY STOCK, 5TH EDITION, 2017, BY THE CANADIAN NURSERY TRADES ASSOCIATION.
- BACKFILL WILL CONSIST OF SOIL NATIVE TO THE SITE OR GENERAL SOIL TYPE/CLASS NATIVE TO THE SITE. TOPSOIL TO BE TESTED FOR NUTRIENT VALUE, AND AMENDED FOR OPTIMAL GROWTH AS PER THE RECOMMENDATIONS OF THE SOIL TEST.
- CONTRACTOR SHALL MAINTAIN ALL LANDSCAPE AREAS UNTIL OWNER'S ACCEPTANCE OF PROJECT.
- CONTRACTOR TO LOCATE ALL UNDERGROUND UTILITIES.
- PLANTING MAY BE ADJUSTED TO SUIT LOCATIONS OF SITE UTILITY STRUCTURES/SERVICES.
- ALL MATERIALS MUST BE APPROVED BY LANDSCAPE ARCHITECT PRIOR TO INSTALLATION.
- SPREAD MULCH TO A MINIMUM OF 100mm COMPACTED DEPTH ON ALL TREE PITS AND PLANTING BEDS.
- CHECK AND VERIFY ALL DIMENSIONS AND QUANTITIES PRIOR TO COMMENCEMENT OF WORK. ANY DISCREPANCIES ARE TO BE REPORTED IN WRITING TO THE LANDSCAPE ARCHITECT. QUANTITIES NOTED WITHIN THE PLAN SUPERCEDE THOSE IN THE PLANT LIST. ANY SUBSTITUTIONS SHALL BE APPROVED BY THE LANDSCAPE ARCHITECT.
- SOD AS MARKED WITH NURSERY SOD ON A MINIMUM OF 100mm OF CLEAN TOPSOIL. FINE GRADE AND SOD ALL BOULEVARD AREAS TO MUNICIPAL SPECIFICATIONS AND REPAIR DAMAGE TO ADJACENT PROPERTIES, AS REQUIRED.
- FINAL INSPECTION AND ACCEPTANCE OF PLANTING WORK SHALL COINCIDE WITH THE FINAL INSPECTION AND ACCEPTANCE OF ALL WORK INCLUDED IN THE CONTRACT.
- ALL SEEDED SLOPES 3:1 AND GREATER TO RECEIVE EROSION CONTROL MATTING. PIN SOD ON ALL SLOPES OF 3:1 OR GREATER.
- SUBMIT A WRITTEN GUARANTEE TO THE EFFECT THAT ALL PLANTS ACCEPTED DURING THE PERIOD OF JANUARY 1st TO JULY 15th SHALL BE GUARANTEED UNTIL JULY 15th THE FOLLOWING YEAR. PLANTS ACCEPTED DURING THE PERIOD OF JULY 15th TO DECEMBER 31st SHALL BE GUARANTEED FOR ONE YEAR FROM THE DATE OF ACCEPTANCE. THE GUARANTEE PERIODS LISTED ABOVE SHALL APPLY TO ALL "NURSERY GROWN" PLANTS.
- AT THE TIME OF FINAL INSPECTION ALL PLANTS SHALL BE IN A HEALTHY, VIGOROUS GROWING CONDITION, PLANTED IN FULL ACCORDANCE WITH DRAWINGS AND CONDITIONS.
- SITE PLAN INFORMATION AS PER MASRI O.
- ENGINEERING AS PER S.LLEWELLYN & ASSOCIATES, AND IS PROVIDED FOR INFORMATION ONLY.
- SITE LIGHTING BY OTHERS



REVISIONS

no.	date	description	by
1.	Nov.23.22	Issued for Approval	DPV

Masri O Inc. Architects
 1866 Rymal Road East
 Hamilton, ON

Landscape Plan



PROJECT NO: 2022-52 DRAWN BY: DPV
 SCALE: 1:200 DESIGNED BY: DPV
 SHEET: L2 APPROVED BY: AWH
 PLOT DATE: NOV 23, 2022