



# Figure 1 Study Area (Initial and Revised)

Melville Street Heritage Conservation District  
Dundas  
City of Hamilton, Ontario

## LEGEND

-  Revised Study Area
-  Initial Study Area



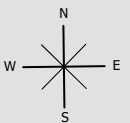
Source: City of Hamilton Open Data (c) 2023,  
Aerial from MAXAR (c) 2021

Date: 25 May 2023

File: 0727AV

Scale: 1:5,500

Drawn: CF



Document Path: K:\0727AV- Dundas Heritage Project\GIS\0727AV\_MelvilleSt\_HeritageInventory\_v2.aprx



PLANNING  
URBAN DESIGN  
& LANDSCAPE  
ARCHITECTURE

200-540 BINGEMANS CENTRE DRIVE, KITCHENER, ON, N2B 3X9 | P: 519.576.3650 | WWW.MHBCPLAN.COM



## Figure 2 Study Area

Melville Street Heritage Conservation District  
Dundas  
City of Hamilton, Ontario

### LEGEND

 Study Area



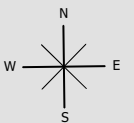
Source: City of Hamilton Open Data (c) 2023,  
Aerial from MAXAR (c) 2021

Date: 25 May 2023

File: 0727AV

Scale: 1:5,500

Drawn: CF



Document Path: K:\0727AV- Dundas Heritage Project\GIS\0727AV\_MelvilleSt\_HeritageInventory\_v2.aprx



PLANNING  
URBAN DESIGN  
& LANDSCAPE  
ARCHITECTURE

200-540 BINGEMANS CENTRE DRIVE, KITCHENER, ON, N2B 3X9 | P: 519.576.3650 | WWW.MHBCPLAN.COM



# Figure 21 HCD Boundary Option 1 (General)

Melville Street Heritage Conservation District  
Dundas  
City of Hamilton, Ontario

## LEGEND

Options

- Option 1
- Study Area
- Parcels



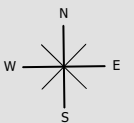
Source: City of Hamilton Open Data (c) 2023,  
Aerial from MAXAR (c) 2021

Date: 29 May 2023

File: 0727AV

Scale: 1:5,500

Drawn: CF



Document Path: K:\0727AV- Dundas Heritage Project\GIS\0727AV\_MelvilleSt\_HeritageInventory\_v2.aprx



PLANNING  
URBAN DESIGN  
& LANDSCAPE  
ARCHITECTURE

200-540 BINGEMANS CENTRE DRIVE, KITCHENER, ON, N2B 3X9 | P: 519.576.3650 | WWW.MHBCPLAN.COM



# Figure 22 HCD Boundary Option 1 (Analysis)

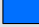
Melville Street Heritage Conservation District  
Dundas  
City of Hamilton, Ontario

### LEGEND

Options

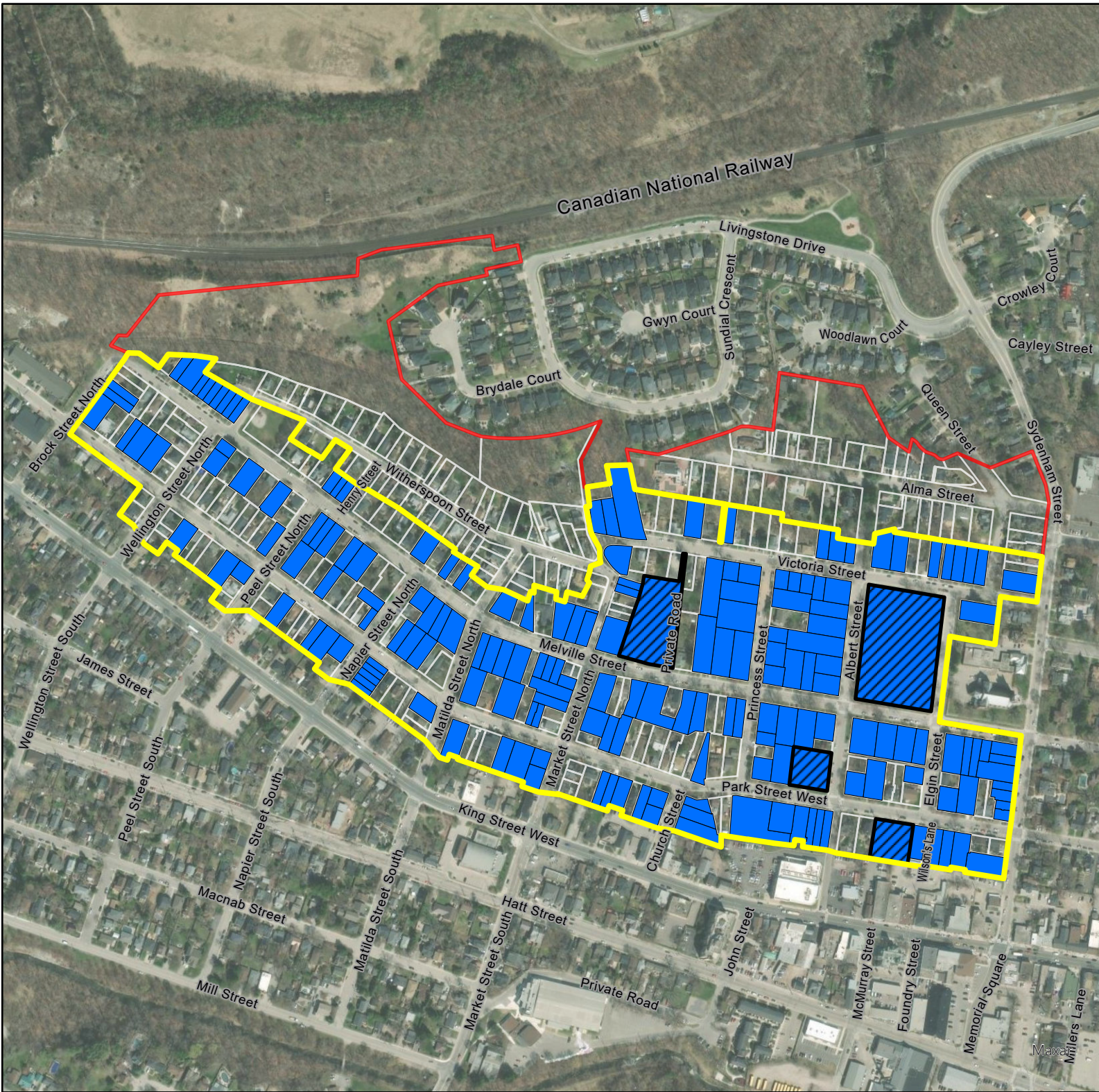
 Option 1

 Landmarks

 Contributing Properties

 Study Area

 Parcels



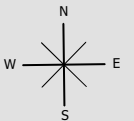
Source: City of Hamilton Open Data (c) 2023,  
Aerial from MAXAR (c) 2021

Date: 29 May 2023

File: 0727AV

Scale: 1:5,500

Drawn: CF



Document Path: K:\0727AV- Dundas Heritage Project\GIS\0727AV\_MelvilleSt\_HeritageInventory\_v2.aprx



PLANNING  
URBAN DESIGN  
& LANDSCAPE  
ARCHITECTURE

200-540 BINGEMANS CENTRE DRIVE, KITCHENER, ON, N2B 3X9 | P: 519.576.3650 | WWW.MHBPLAN.COM



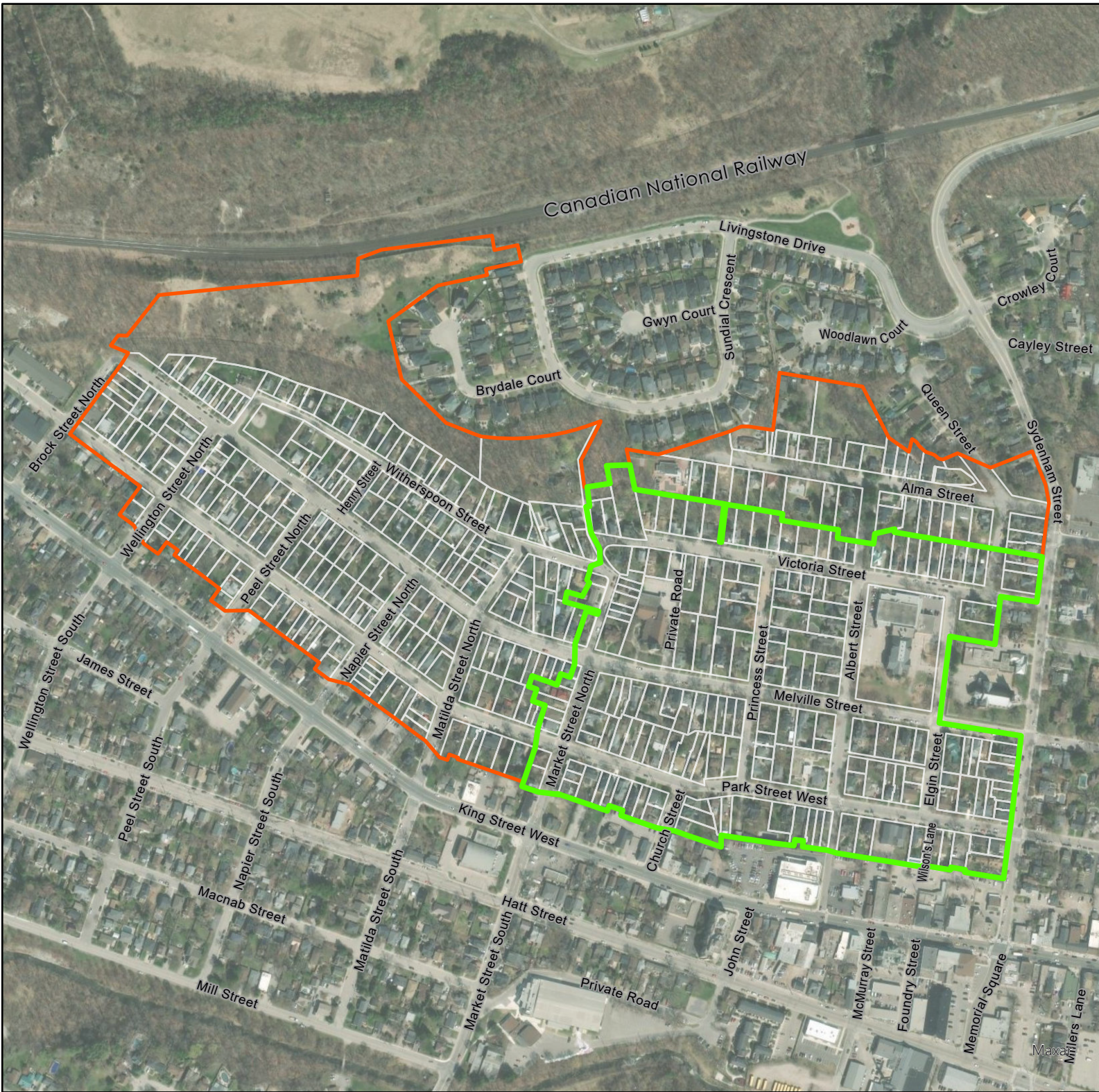
# Figure 23 HCD Boundary Option 2 (General)

Melville Street Heritage Conservation District  
Dundas  
City of Hamilton, Ontario

## LEGEND

Options

- Option 2
- Study Area
- Parcels



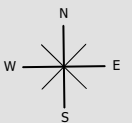
Source: City of Hamilton Open Data (c) 2023,  
Aerial from MAXAR (c) 2021

Date: 29 May 2023

File: 0727AV

Scale: 1:5,500

Drawn: CF



Document Path: K:\0727AV- Dundas Heritage Project\GIS\0727AV\_MelvilleSt\_HeritageInventory\_v2.aprx



PLANNING  
URBAN DESIGN  
& LANDSCAPE  
ARCHITECTURE

200-540 BINGEMANS CENTRE DRIVE, KITCHENER, ON, N2B 3X9 | P: 519.576.3650 | WWW.MHBCPLAN.COM



# Figure 24 HCD Boundary Option 2 (Analysis)


Melville Street Heritage Conservation District  
Dundas  
City of Hamilton, Ontario

### LEGEND


Options

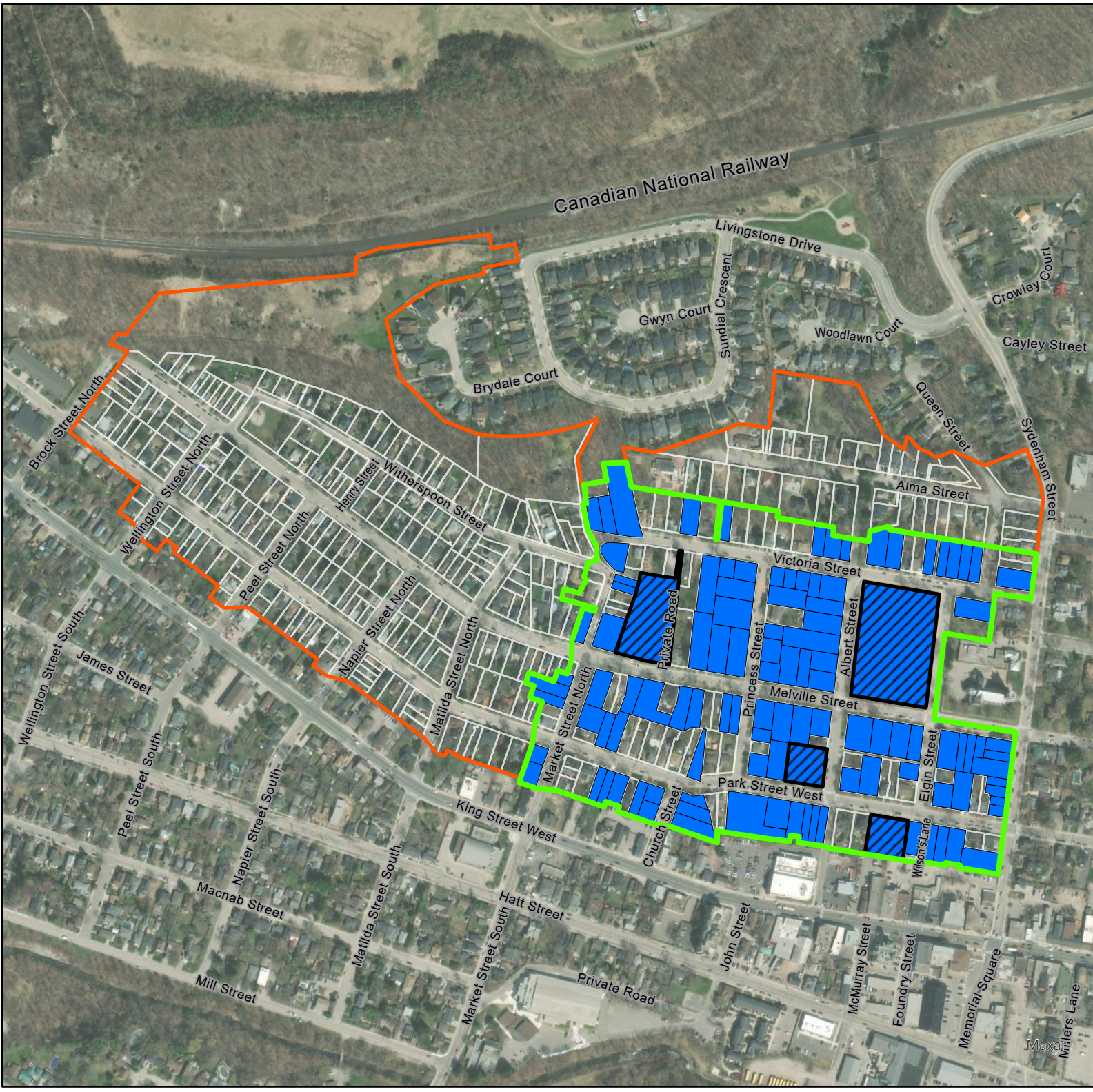
 Option 2

 Landmarks

 Contributing Properties

 Study Area

 Parcels



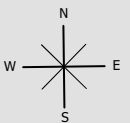
Source: City of Hamilton Open Data (c) 2023,  
Aerial from MAXAR (c) 2021

Date: 29 May 2023

File: 0727AV

Scale: 1:5,500

Drawn: CF



Document Path: K:\0727AV- Dundas Heritage Project\GIS\0727AV\_MelvilleSt\_HeritageInventory\_v2.aprx



PLANNING  
URBAN DESIGN  
& LANDSCAPE  
ARCHITECTURE

200-540 BINGEMANS CENTRE DRIVE, KITCHENER, ON, N2B 3X9 | P: 519.576.3650 | WWW.MHBPLAN.COM