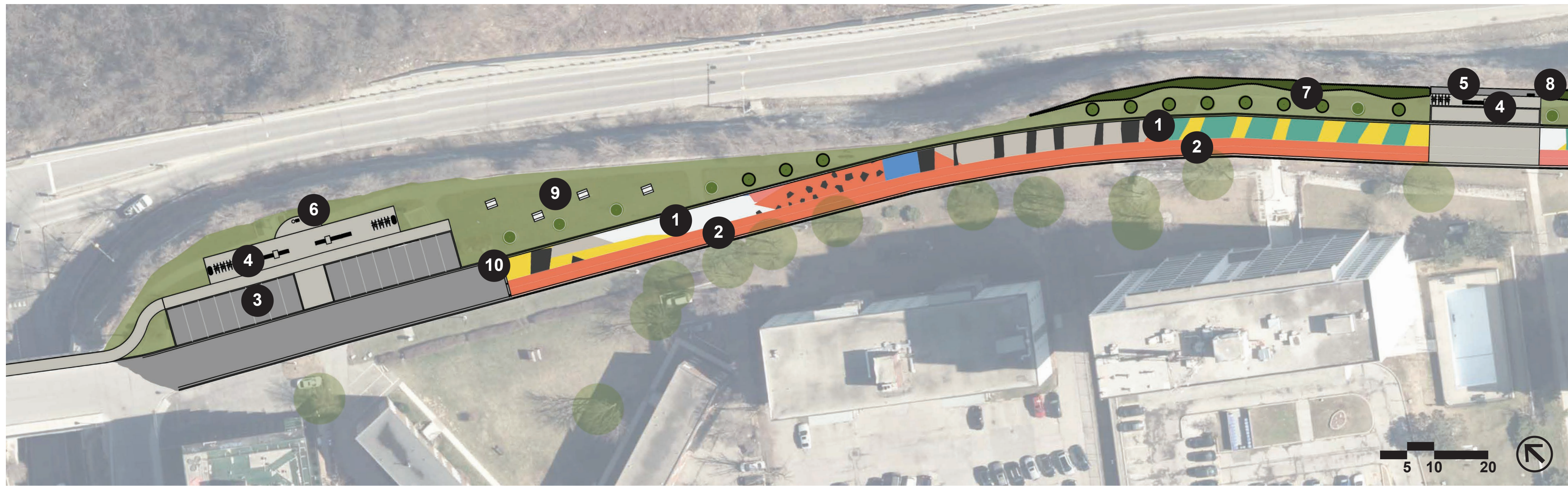
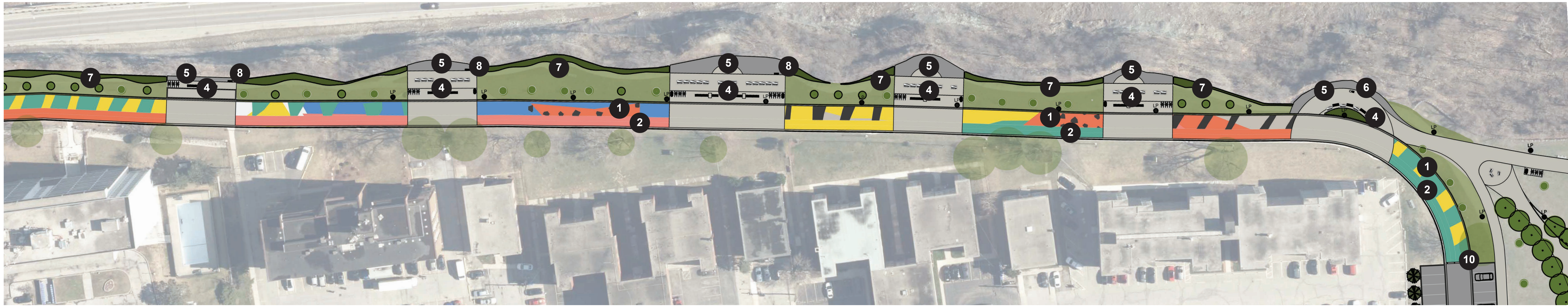


# Mountain Drive Park Master Plan - Streetscape Concept B



Streetscape Concept B - Perspective



1 Multi-Use Trail - Pedestrian



3 Parking Area



5 Viewing Area



7 Native Planting



8 Interpretive Signage



2 Multi-Use Trail - Cycling



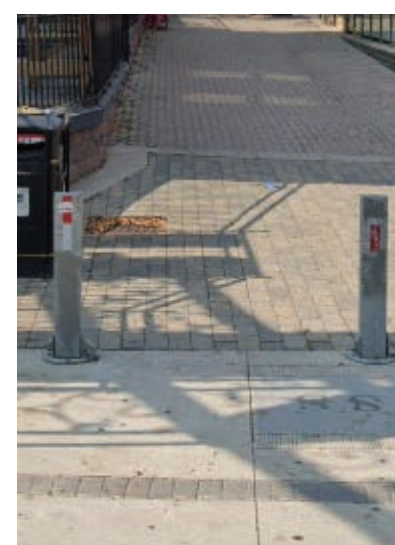
4 Furnishing Zone



6 Binocular



9 Open Lawn



10 Bollards



Existing Streetscape Conditions